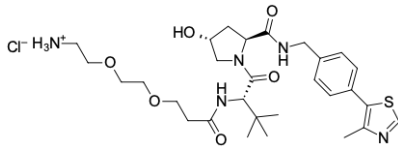


(S,R,S)-AHPC-PEG2-C2-amine

<http://cn.lumiprobe.com/p/ahpc-peg2-c2-amine>

Proteolysis targeting chimeras (PROTACs) are cell-permeable heterobifunctional molecules that can remove specific proteins from the cell. One end of such molecule contains a ligand to bind to the target, and the second end recruits the E3 ligase complex. Close proximity results in substrate polyubiquitination and subsequent protein degradation by cellular proteasome.

(S,R,S)-AHPC-C2-amine is a protein degrader building block for synthesizing molecules for targeted protein degradation and PROTAC technologies. This conjugate contains a von Hippel-Lindau (VHL)-recruiting ligand and a PEG2-C2 crosslinker with an amine function group, which can be conjugated to other functionalized linkers and target protein ligands.



外观: 米色泡沫

分子

量: 626.21

重量:

CAS 2138439-54-8

编号:

分子

式: C₂₉H₄₄ClN₅O₆S

溶解

度: 甲醇、乙酸乙酯、DCM、THF、DMF、DMSO

质量

控制: NMR ¹H 和 HPLC-MS (95+%)

储存

条件:

收到后在 -20°C 黑暗条件下可保存 24 个月。运输: 室温下最多可保存 3 周。干燥。

法律

声明:

本产品仅供研究目的提供和销售。本产品并未经过食品、药品、医疗器械、化妆品等领域的安全性和效力测试,且未经明示或暗示授权用于其他任何用途,包括但不限于体外诊断、人类或动物用途,以及商业用途。