

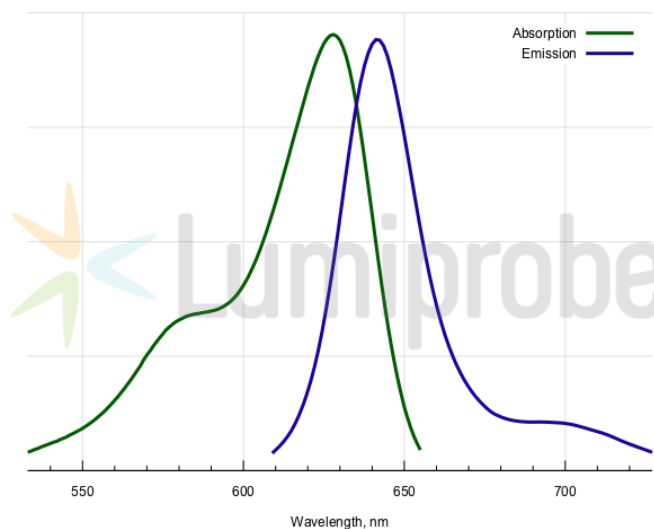
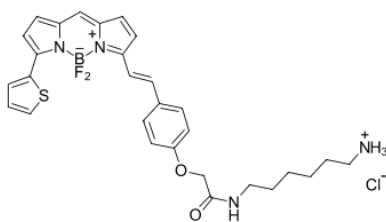
BDP® 630/650 amine

<http://cn.lumiprobe.com/p/bdp-630-650-amine>

BDP 630/650 is a far red emitting, borondipyrromethene based fluorophore. The dye is tuned to match the standard Cy5 channel, and can be used as an alternative to [Cyanine5](#) and [sulfo-Cyanine5](#). Compared to cyanines, BDP 630/650 possesses a longer fluorescence lifetime which is important for fluorescence anisotropy measurements.

BDP 630/650 has a brightness similar to cyanines, and an exceptional photostability.

This amine derivative is useful for the reaction with electrophiles, and for enzymatic transamination labeling.



外观:

分子 584.92

量:

分子 $C_{29}H_{32}N_4BClF_2O_2S$

式:

溶解

度:

质量

控制:

储存

条件:

法律 本产品仅供研究目的提供和销售。 本产品并未经过食品、药品、医疗器械、化妆品等领域的安全性和效力测试，且未经明示或暗示授权用于其他任何用途，包括但不限于体外诊断、人类或动物用途，以及商业用途。

激发/ 628

吸收

极大

值,

纳米:

ϵ , 摩 97000

尔吸

光系

数 m^2

发射 642

极大

值,

纳米:

荧光 0.91

量子

产率:

CF_{260} : 0.029

CF_{280} : 0.035