

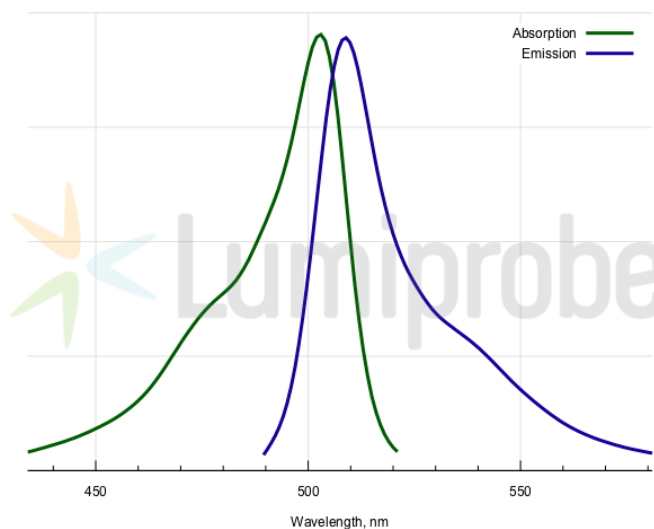
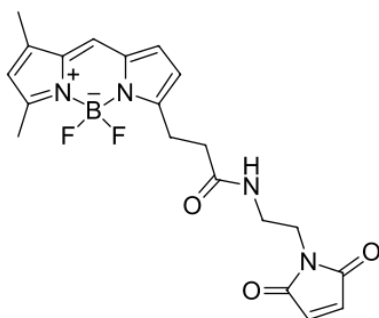
BDP FL maleimide

<http://cn.lumiprobe.com/p/bdp-fl-maleimide>

Thiol reactive BDP FL maleimide is a reactive dye for protein labeling.

BDP FL is a borondipyrromethene dye which has absorption and fluorescence spectra similar to fluorescein (FAM). However, this dye exhibits very high photostability. It is non-charged, and has low molecular weight. Its brightness is similar to fluorescein, R110 and xanthene dye derivatives.

This fluorophore is ideal for fluorescent microscopy and many other applications. The fluorophore can substitute fluorescein for almost any application, and it is compatible with any FAM-capable fluorescent instrumentation.



外观:

质谱 414.1

M+

增量:

分子 414.21

量:

CAS 773859-49-7

编号:

分子 $C_{20}H_{21}BF_2N_4O_3$

式:

溶解

度:

质量

控制:

储存

条件:

法律 本产品仅供研究目的提供和销售。 本产品并未经过食品、药品、医疗器械、化妆品等领域的安全性和效力测试，且未经明示或暗示授权用于其他任何用途，包括但不限于体外诊断、人类或动物用途，以及商业用途。

激发/ 503

吸收

极大

值,

纳米:

ϵ , 摩

尔吸

光系

数 nt

发射 509

极大

值,

纳米:

荧光 0.97

量子

产率:

CF_{260} : 0.015

CF_{280} : 0.027