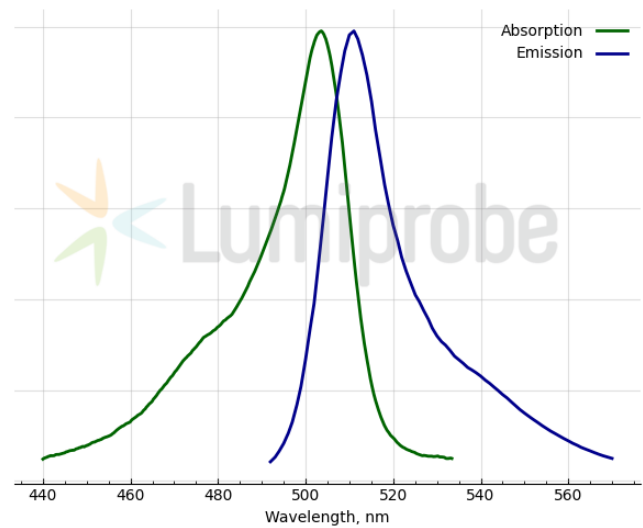
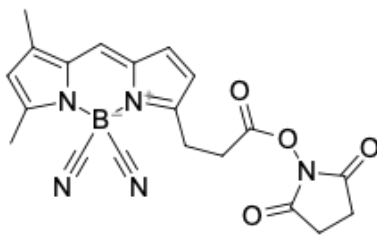


BDPep FL NHS ester

<http://cn.lumiprobe.com/p/bdp-fl-spps-nhs-ester>

BDPep FL is a bright and photostable fluorophore for the fluorescein (FAM) channel. BDPep FL is an acid-stable version of BDP FL, keeping similar spectral properties to its ancestor. The compatibility of BDPep FL with TFA with additives used in solid phase peptide synthesis (SPPS) is a crucial advantage of this dye compared to other analogs.

BDPep FL is beneficial for peptide synthesis due to its high stability and the absence of the dye decomposition to the corresponding dipyrin under acidic conditions.



外观:

分子量: 403.21

分子式: $C_{20}H_{18}BN_5O_4$

溶解度:

质量控制:

储存条件:

激发/吸收极大值, 纳米: 503

ϵ , 摩尔吸光系数, cm^{-1} : 80000

发射极大值, 纳米: 511

荧光量子产率: 0.95