

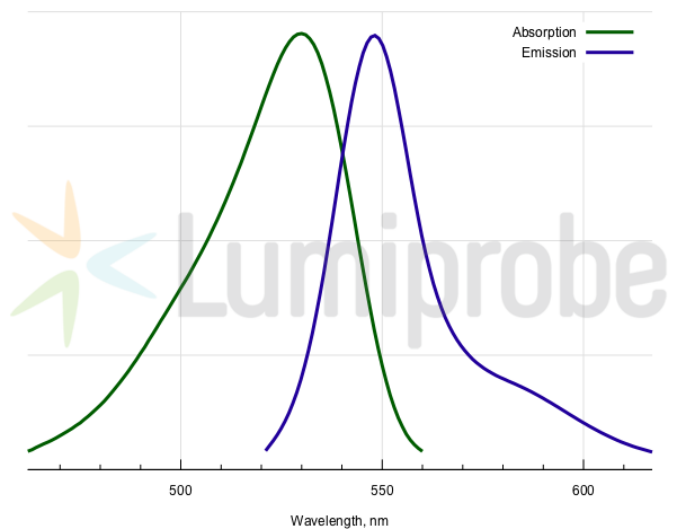
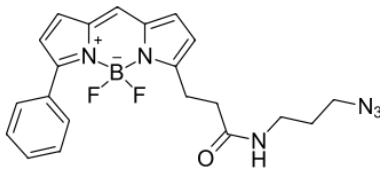
## BDP® R6G azide

<http://cn.lumiprobe.com/p/bdp-r6g-azide>

Borondipyrromethene (BDP) dyes are high performance fluorophores that exhibit excellent photostability and brightness. A number of BDP dyes is available that are tuned to match excitation and emission channels of classical xanthene and cyanine dyes.

BDP R6G is matched to R6G dye excitation and emission wavelengths. The fluorophore is an excellent alternative to R6G for various applications, including microscopy, fluorescence polarization assays, and two photon experiments.

Azide functional group allows to conjugate the fluorophore easily with various biomolecules, small molecules, and polymers using CuAAC or spAAC Click chemistry reactions.



外观:

分子 422.24

量:

CAS 2183473-23-4

编号:

分子  $C_{21}H_{21}N_6BF_2O$

式:

IUPAC 3-(3-(4,4-Difluoro-5-phenyl-3a,4a-diaza-4-bora-s-indacen-3-yl)propionylamino)propylazide

名称:

溶解

度:

质量

控制:

储存

条件:

法律 本产品仅供研究目的提供和销售。 本产品并未经过食品、药品、医疗器械、化妆品等领域的安全性和效力测试，且未经明示或暗示授权用于其他任何用途，包括但不限于体外诊  
声明: 断、人类或动物用途，以及商业用途。

激发/ 530

吸收

极大

值,

纳米:

发射 548

极大

值,

纳米:

荧光 0.96

量子

产率:

$CF_{260}$ : 0.17

$CF_{280}$ : 0.18