

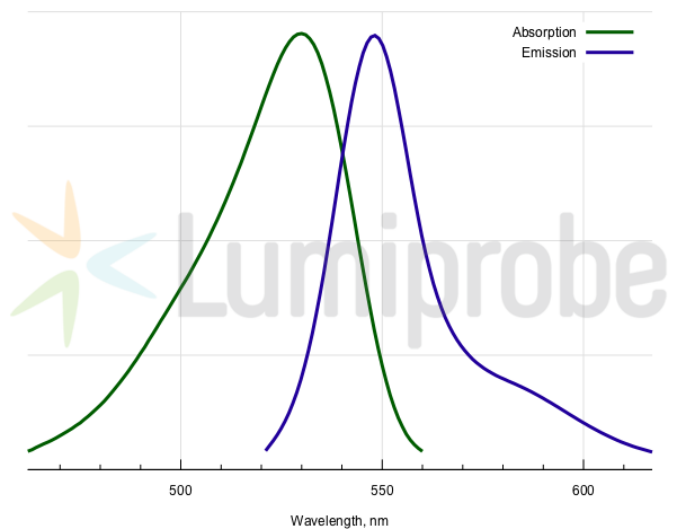
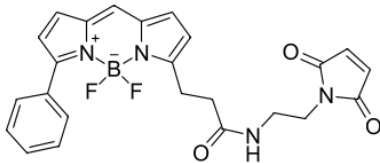
BDP® R6G maleimide

<http://cn.lumiprobe.com/p/bdp-r6g-maleimide>

BDP R6G is a borondipyrromethene fluorophore whose absorption and emission spectra match those of rhodamine 6G (R6G) dye.

Thiol labeling is often an option of choice for the modification of proteins. Limited number of cysteine residues in proteins allow for more site-specific labeling than NHS ester labeling of amine groups, which are encountered in large number in many proteins.

This maleimide is a thiol reactive dye. Please refer to our recommended labeling protocol to achieve modification of your protein with this reagent.



外观:

质谱 462.2

M+

增量:

分子 462.26

量:

CAS 2183473-32-5

编号:

分子 $C_{24}H_{21}N_4BF_2O_3$

式:

IUPAC 1-Phenyl-6-(2-(2-(N-maleimido)ethylaminocarbonyl)ethyl)borondipyrromethene

名称:

溶解

度:

质量

控制:

储存

条件:

法律声明: 本产品仅供研究目的提供和销售。 本产品并未经过食品、药品、医疗器械、化妆品等领域的安全性和效力测试, 且未经明示或暗示授权用于其他任何用途, 包括但不限于体外诊断、人类或动物用途, 以及商业用途。

激发/ 530

吸收

极大

值,

纳米:

发射 548

极大

值,

纳米:

荧光 0.96

量子

产率:

CF₂₆₀: 0.17

CF₂₈₀: 0.18