

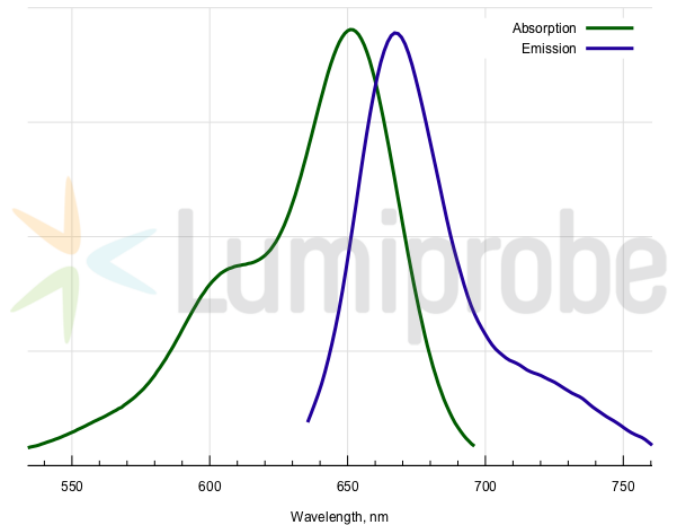
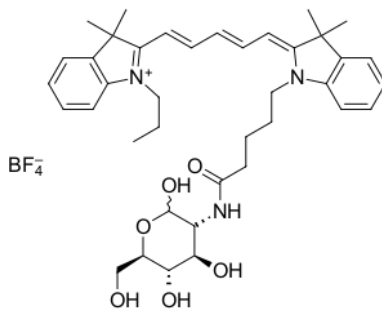
CDr17 M1 Macrophage Stain

<http://cn.lumiprobe.com/p/cdr17-m1-macrophage-stain>

CDr17 is a selective small-molecule fluorescent probe designed for the identification and tracking of M1 macrophages. The labeling method is based on the higher expression of the GLUT1 transporter in M1 (pro-inflammatory) macrophages compared to M0 (resting) and M2 (anti-inflammatory) macrophages. CDr17 probe is composed of a glucose scaffold and a 2-position Cyanine5 fluorophore, and due to this, it is taken up into cells specifically through the GLUT1 transporter. The CDr17 accumulation is directly proportional to GLUT1 expression levels.

CDr17 has been demonstrated to track M1 macrophages *in vivo* in a rheumatoid arthritis animal model ^[1].

[1] Cho H. et al. Visualizing inflammation with an M1 macrophage selective probe via GLUT1 as the gating target. Nat. Commun. 2022. 13. 5974.



外观: 分子 745.66
量: 分子 C₃₀H₃₂BF₄N₃O₆
式:
溶解度:
质量 NMR ¹H和HPLC-MS (95+%)
控制:
储存 接收后24个月在黑暗中-20°C。运输: 在室温下最多3周。干燥。
条件:
法律声明: 本产品仅供研究目的提供和销售。 本产品并未经过食品、药品、医疗器械、化妆品等领域的安全性和效力测试, 且未经明示或暗示授权用于其他任何用途, 包括但不限于体外诊断、人类或动物用途, 以及商业用途。

激发/吸收极大值, 纳米: 646
发射极大值, 纳米: 662