

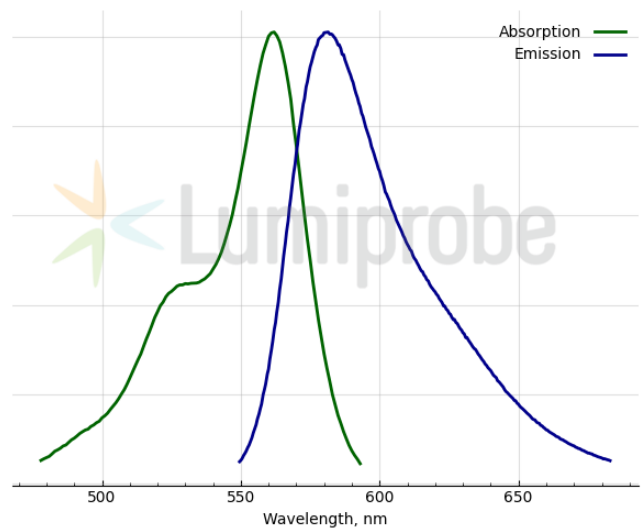
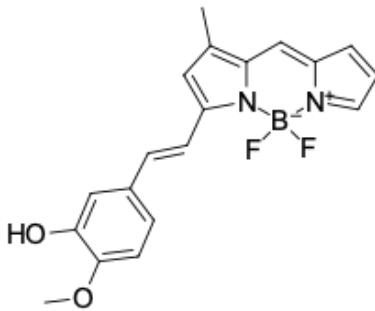
LumiCell CDr20 Microglia Stain

<http://cn.lumiprobe.com/p/cdr20-microglia-stain>

CDr20 (Cell Designation red 20) is a high-performance fluorogenic chemical probe for labeling microglia in both cell cultures and live brains. CDr20 is a substrate of microglia-specific UDP-glucuronosyltransferase Ugt1a7c. The glucuronidation of CDr20 by Ugt1a7c produces bright red fluorescence in microglial cells coinciding with the expression of markers P2ry12, Csf1r, Cx3cr1, and Iba-1 [1].

CDr20 could be a valuable tool for identifying and visualizing microglia in neural disorder studies both *in vitro* and *in vivo* and for CDr20-based fluorescent-activated microglial cell sorting (FACS).

[1] Kim B. et al. Visualizing Microglia with a Fluorescence Turn-On Ugt1a7c Substrate. *Angew. Chem. Int. Ed. Engl.* 2019. 58(24). 7972-7976.



外观:

分子 354.17

量:

CAS 1201643-01-7

编号:

分子 $C_{19}H_{17}BF_2N_2O_2$

式:

溶解

度:

质量

控制:

储存

条件:

法律 本产品仅供研究目的提供和销售。 本产品并未经过食品、药品、医疗器械、化妆品等领域的安全性和效力测试，且未经明示或暗示授权用于其他任何用途，包括但不限于体外诊断、人类或动物用途，以及商业用途。

激发/ 562

吸收

极大

值,

纳米:

ϵ , 摩

尔吸

光系

数 **art**

发射 581

极大

值,

纳米: