

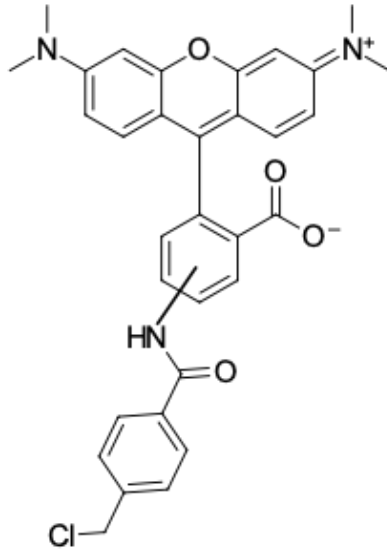
CytoTracer Orange CMTMR

<http://cn.lumiprobe.com/p/cmtmr-celltracker-orange>

CytoTracer Orange CMTMR is an orange fluorescent dye for labeling and long-term tracing of living cells. In working concentrations, the dye has little cytotoxicity and minimal effects on the proliferative ability or biology of the cell. It can be used to analyze cell proliferation, viability, localization, and motility for *in vivo* and *in vitro* assays.

CytoTracer Orange CMTMR is a cell-permeant stain that converts into cell-impermeant reaction products inside the cell. During proliferation, the label is transferred to daughter cells, but not adjacent cells in the population, and labeled cells keep the fluorescence for at least 72 hours or through three to six cell generations.

CytoTracer Orange CMTMR contains a chloromethyl group that reacts with thiol groups of internal cell components, utilizing a glutathione S-transferase-mediated reaction. This allows the stain to remain in cells after fixation and permeabilization steps and be used for subsequent immunofluorescence applications.



外观: 红色固体

分子量: 554.0

编号:

CAS 323192-14-9

分子式:

$C_{32}H_{28}ClN_3O_4$

名称:

IUPAC 9-[2-carboxy-4-(or 5)-[[4-(chloromethyl)benzoyl]amino]phenyl]-3,6-bis(dimethylamino)-xanthylum, inner salt

质量

控制: NMR 1H 和 HPLC-MS (95+%)

储存

条件: 收到后在 $-20^{\circ}C$ 黑暗条件下可保存 24 个月。运输: 室温下最多可保存 3 周。干燥。

法律

声明: 本产品仅供研究目的提供和销售。本产品并未经过食品、药品、医疗器械、化妆品等领域的安全性和效力测试, 且未经明示或暗示授权用于其他任何用途, 包括但不限于体外诊断、人类或动物用途, 以及商业用途。