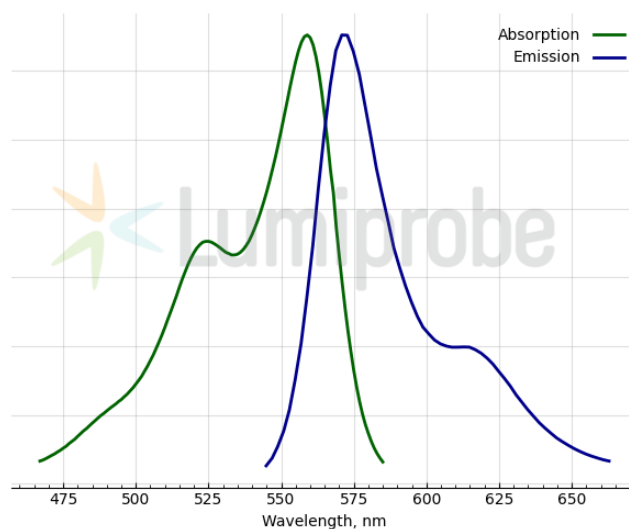
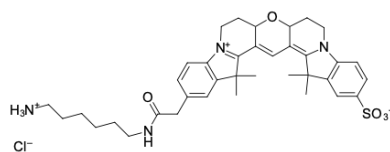


## Cyanine3B amine

<http://cn.lumiprobe.com/p/cy3b-amine>

Cyanine3B is a yellow-emitting cyanine dye that is an improved version of the Cyanine3 fluorophore with significantly higher fluorescence quantum yield and photostability.

This product is an amine-containing fluorescent dye. The amine group is separated from the fluorophore by a relatively long linker that facilitates conjugation. The aliphatic primary amine group can be coupled with various electrophiles (activated esters, epoxides, etc.) and used in enzymatic transamination labeling.



外观:

分子量: 695.33

分子式:  $C_{37}H_{47}ClN_4O_5S$

溶解度:

质量控制:

储存条件:

激发/吸收极大值, 纳米: 559

$\epsilon$ , 摩尔吸光系数,  $cm^{-1}$ : 121000

发射极大值, 纳米: 571

荧光量子产率: 0.68

$CF_{260}$ : 0.044

$CF_{280}$ : 0.077