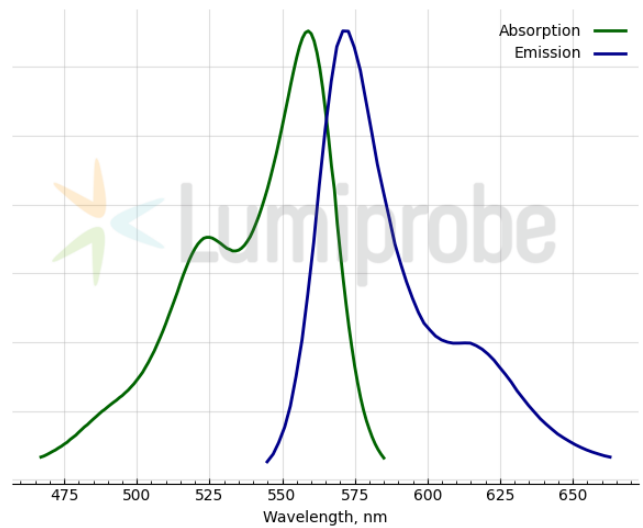
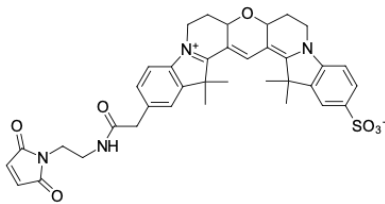


## Cyanine3B maleimide

<http://cn.lumiprobe.com/p/cy3b-maleimide>

Cyanine3B is one of the brightest fluorophores possessing high sensitivity. Cyanine3B dye maleimide is used to produce maleimide-thiol conjugates via thiols to antibodies, peptides, and other biomolecules with Cyanine3B fluorophore with high fluorescence quantum yield and photostability. Michael-addition of a thiol to a maleimide approach enables the selective method of antibody labeling.

This is a sulfonated dye and can be used for efficient labeling in water buffers.



外观:

分子量: 682.80

分子式: C<sub>37</sub>H<sub>38</sub>N<sub>4</sub>O<sub>7</sub>S

溶解度:

质量控制:

储存条件:

法律声明:

激发/吸收极大值, 纳米: 559

ε, 摩尔吸光系数, cm<sup>-1</sup>: 121000

发射极大值, 纳米: 571

荧光量子产率: 0.68

CF<sub>260</sub>: 0.044

CF<sub>280</sub>: 0.077