

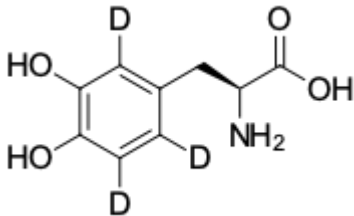
L-DOPA-d3

<http://cn.lumiprobe.com/p/l-dopa-d3>

L-DOPA-d3 is deuterated form of 3-(3,4-Dihydroxyphenyl)-L-alanine amino acid (L-DOPA). L-DOPA-d3 is intended for use as an internal standard for the quantification of L-DOPA in human plasma by LC-MS-MS.

L-3,4-Dihydroxyphenylalanine (L-DOPA) is a metabolic precursor of the neurotransmitter dopamine. In medicine, it is used as a replacement therapy for Parkinson's disease, compensating for the dopamine deficiency in the nigrostriatal system. In research, it serves as a marker for assessing the integrity and functional activity of dopaminergic neurons, particularly during PET imaging. Measurement of its plasma concentration is performed to monitor the drug's bioavailability and pharmacokinetics in patients, optimize dosing to manage dyskinesias, and diagnose aromatic L-amino acid decarboxylase (AADC) deficiency.

Using our product, you can accurately measure L-DOPA concentration in blood and use this data to tailor an optimal therapy.



外观:

分子 200.21

量:

CAS 53587-29-4

编号:

分子 $C_9H_8D_3NO_4$

式:

质量 NMR^1H 和 $HPLC-MS$ (95+%、D: 98+%)

控制:

储

存

条

件:

法

律

声

明:

本产品仅供研究目的提供和销售。 本产品并未经过食品、药品、医疗器械、化妆品等领域的安全性和效力测试，且未经明示或暗示授权用于其他任何用途，包括但不限于体外诊断、人类或动物用途，以及商业用途。