

Lucifer Yellow CH

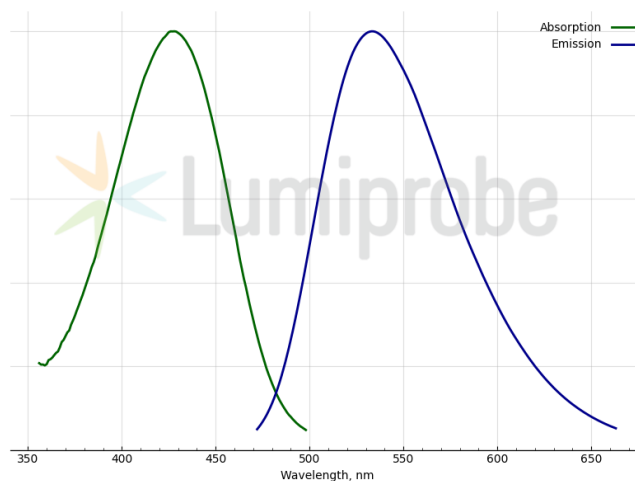
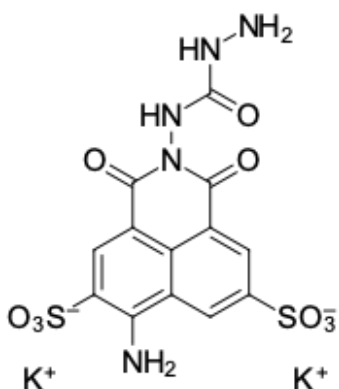
<http://cn.lumiprobe.com/p/lucifer-yellow-ch>

Lucifer Yellow CH is a highly sensitive yellow fluorescent dye widely used in neurobiology, cytology, and molecular biology for cell tracing, studying cell-cell interactions, and visualizing neurons. The dye is suitable for labeling both live and fixed preparations: it has low cytotoxicity, is retained in cells after fixation (e.g., with paraformaldehyde), and is compatible with most immunocytochemistry protocols. Lucifer Yellow CH has a high quantum yield, is resistant to photobleaching, and is, therefore, ideal for confocal and fluorescence microscopy.

The main dye application:

- Neuronal tracking: Dye injection allows for tracking the morphology of axons and dendrites *in vivo* and *in vitro*.
- Iontophoresis: Used to label individual cells in electrophysiological studies.
- Transfection: Compatible with microinjection and electroporation methods.

Working dye concentration: 1-5% (depending on protocol).



外观:
分子 521.57
量:
CAS 71206-95-6 (dipotassium salt); 67769-47-5 (dilithium salt)
编号:
分子 $C_{13}H_9K_2N_3O_9S_2$
式:
溶解 水中良好
度:
质量 NMR 1H 和HPLC-MS (95+%)
控制:
储存 接收后24个月在黑暗中-20°C。运输: 在室温下最多3周。干燥。
条件:

法律声明: 本产品仅供研究目的提供和销售。 本产品并未经过食品、药品、医疗器械、化妆品等领域的安全性和效力测试, 且未经明示或暗示授权用于其他任何用途, 包括但不限于体外诊断、人类或动物用途, 以及商业用途。

激发/吸收极大值, 纳米: 428

发射 533
极大
值，
纳
米：