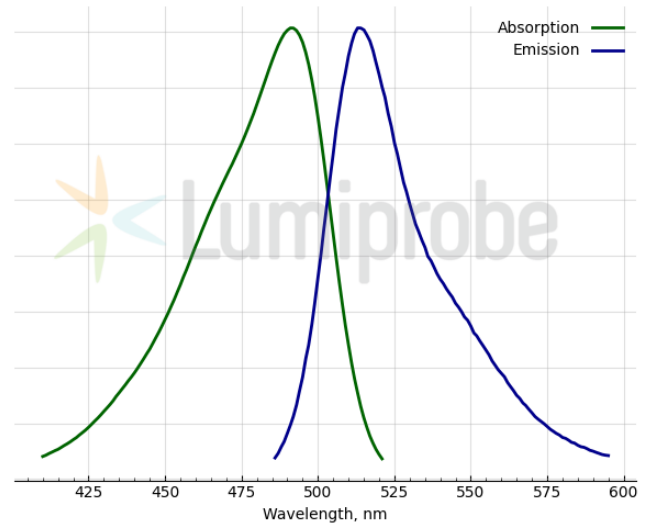
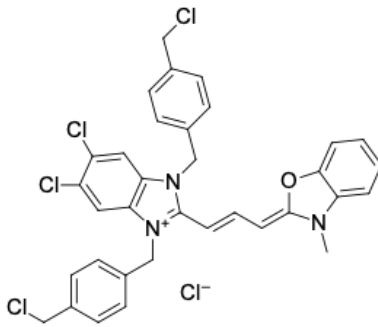


LumiTracker® Mito Green FM

<http://cn.lumiprobe.com/p/mitotracker-green-fm>

LumiTracker Mito Green FM is a cationic green-fluorescent dye that stains mitochondria in live cells. The dye passively diffuses across the plasma membrane and selectively accumulates in active mitochondria based on their membrane potential; therefore, it is often used to assess cells' health and as a dye for mitochondrial localization.

The fluorescence of LumiTracker Mito Green FM disappears after fixation with aldehydes, so this dye is only suitable for working with living cells.



外观:

分子 671.88

量:

分子 C₃₄H₂₈Cl₅N₃O

式:

质量

控制:

储存

条件:

法律 本产品仅供研究目的提供和销售。 本产品并未经过食品、药品、医疗器械、化妆品等领域的安全性和效力测试，且未经明示或暗示授权用于其他任何用途，包括但不限于体外诊断、人类或动物用途，以及商业用途。

激发/ 491

吸收

极大

值,

纳米:

ε, 摩 93500

尔吸

光系

数 m²

发射 513

极大

值,

纳米: