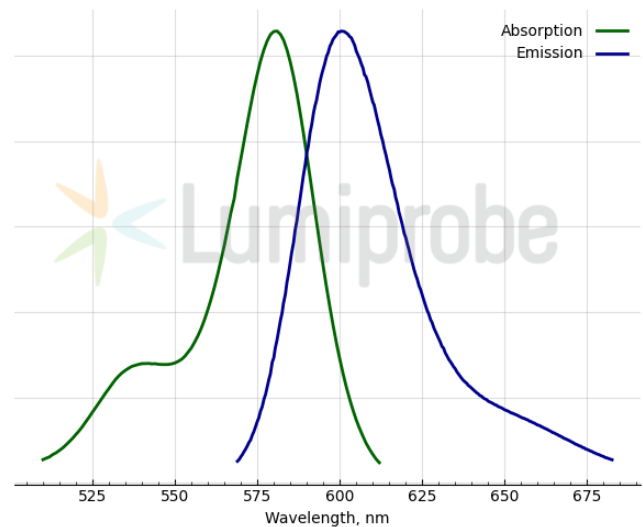
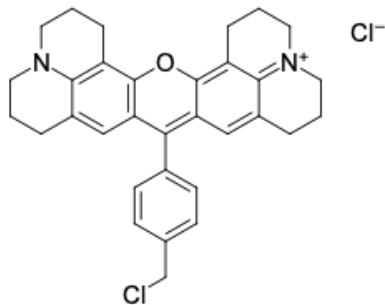


LumiTracker® Mito Red CMXRos

<http://cn.lumiprobe.com/p/mitotracker-red-cmxros>

LumiTracker Mito Red CMXRos is a cationic, red-fluorescent dye for staining active mitochondria in live cells. CMXRos is a hydrophobic compound that passively diffuses across the plasma membrane and selectively accumulates in active mitochondria based on their membrane potential. LumiTracker Mito Red CMXRos is compatible with aldehyde fixation. This dye is useful to indicate cell health as well as for mitochondria localization.

Ros in the name of this product stands for rosamine and has nothing to do with the detection of reactive oxygen species (ROS).



外观:

分子 531.53
量:

CAS 167095-09-2

编号:

分子 C₃₂H₃₂Cl₂N₂O
式:

溶解
度:

质量
控制:

储存
条件:

法律 本产品仅供研究目的提供和销售。 本产品并未经过食品、药品、医疗器械、化妆品等领域的安全性和效力测试，且未经明示或暗示授权用于其他任何用途，包括但不限于体外诊断、人类或动物用途，以及商业用途。

激发/ 581

吸收
极大
值,
纳米:

ε, 摩
尔吸
光系
数 m²

发射
极大
值,
纳米:

荧光 0.91

量子
产率: