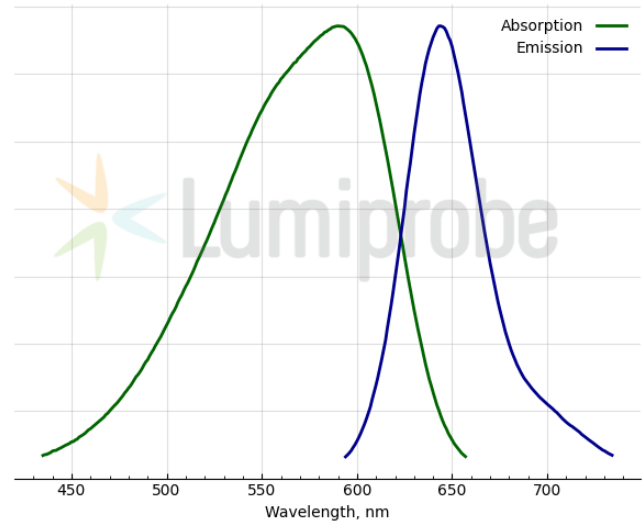
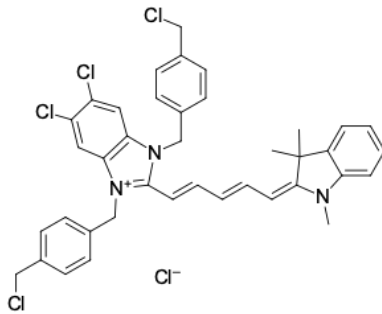


## LumiTracker® Mito Red FM

<http://cn.lumiprobe.com/p/mitotracker-red-fm>

LumiTracker Mito Red FM is a cationic, red-fluorescent dye that stains mitochondria in live cells. The dye passively diffuses across the plasma membrane and selectively accumulates in active mitochondria based on their membrane potential; therefore, it is often used to assess cells' health and as a dye for mitochondrial localization.

The fluorescence of LumiTracker Mito Red FM disappears after fixation with aldehydes, so this dye is only suitable for working with living cells.



外观:

分子 724.00

量:

分子 C<sub>39</sub>H<sub>36</sub>Cl<sub>5</sub>N<sub>3</sub>

式:

质量

控制:

储存

条件:

法律 本产品仅供研究目的提供和销售。 本产品并未经过食品、药品、医疗器械、化妆品等领域的安全性和效力测试，且未经明示或暗示授权用于其他任何用途，包括但不限于体外诊断、人类或动物用途，以及商业用途。

激发/ 590

吸收

极大

值,

纳米:

ε, 摩 74000

尔吸

光系

数  $m^2$

发射 643

极大

值,

纳米:

荧光 0.14

量子

产率: