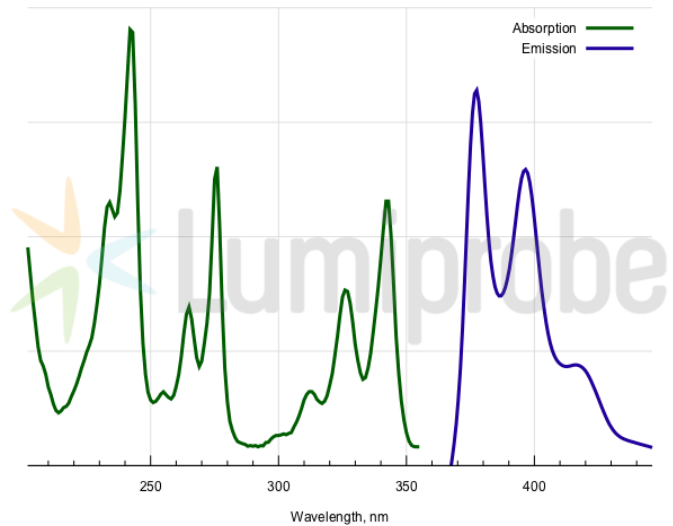
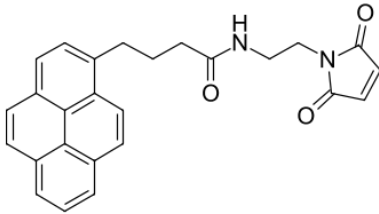


## Pyrene maleimide

<http://cn.lumiprobe.com/p/pyrene-maleimide>

Pyrene is a fluorescent hydrocarbon which emits in blue region. This is a maleimide derivative of pyrenebutyric acid which reacts with thiols.

Pyrene is a useful proximity probe because two pyrene residues close to each other exhibit strong excimer fluorescence.



外观:

质谱 M+ 增量:

410.2

分子量:

410.46

CAS 编号:

1869968-64-8

分子式:

$C_{26}H_{22}N_2O_3$

溶解度:

质量控制:

储存条件:

激发/吸收极大值, 纳米: 343; 326; 313; 276; 265; 242; 234

发射极大值, 纳米: 377; 397