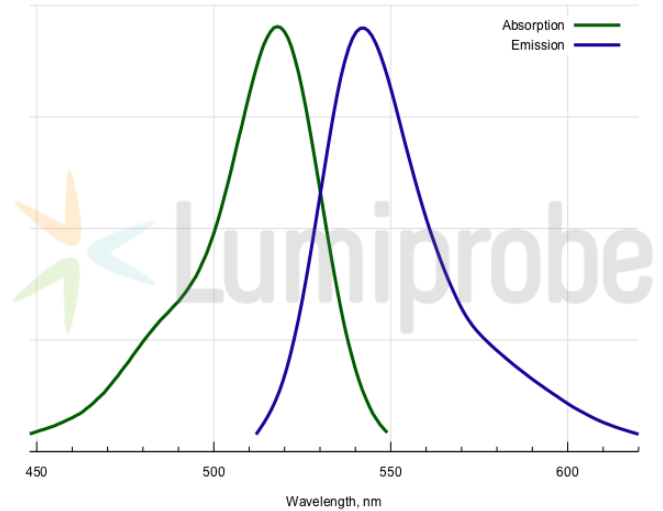
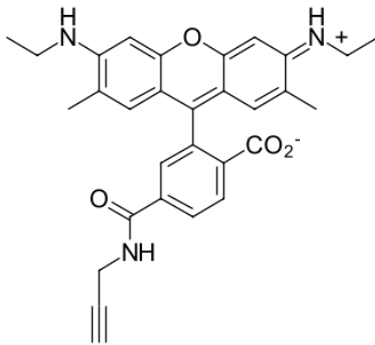


R6G alkyne, 6-isomer

<http://cn.lumiprobe.com/p/r6g-alkyne-6>

Rhodamine 6G (R6G) is a xanthene dye of rhodamine series. Compared to fluorescein, its emission is shifted to red. It is also much more photostable. The fluorophore has a high quantum yield.

This R6G product contains a terminal alkyne moiety for the conjugation with azides in the presence of copper (I) catalyst.



外观:

质谱 494.2

M+

增量:

分子 495.57

量:

分子 $C_{30}H_{29}N_3O_4$

式:

溶解

度:

质量

控制:

储存

条件:

法律声明: 本产品仅供研究目的提供和销售。 本产品并未经过食品、药品、医疗器械、化妆品等领域的安全性和效力测试, 且未经明示或暗示授权用于其他任何用途, 包括但不限于体外诊断、人类或动物用途, 以及商业用途。

激发/ 518

吸收

极大

值,

纳米:

ϵ , 摩 116000

尔吸

光系

数 m^2

发射 542

极大

值,

纳米:

荧光 0.95

量子

产率:

CF₂₆₀: 0.18

CF₂₈₀: 0.17