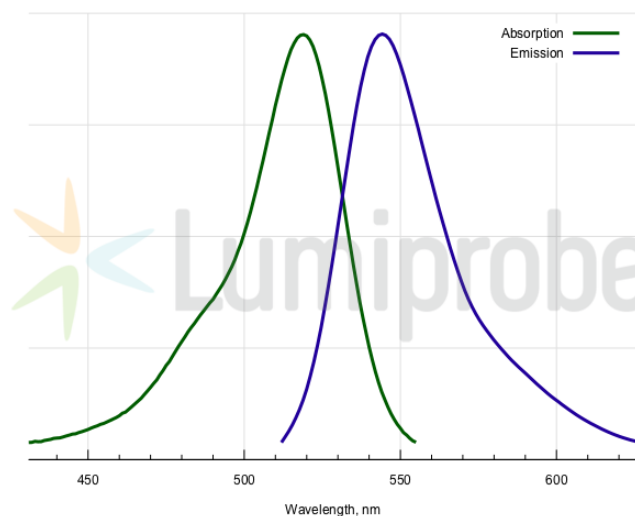
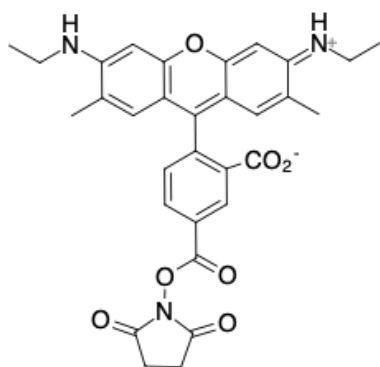


## R6G NHS ester, 5-isomer

<http://cn.lumiprobe.com/p/r6g-nhs-ester-5>

Rhodamine 6G (R6G) is a xanthene dye of rhodamine series that has been used for the labeling of oligonucleotides and DNA for quite a long time. Just like other xanthenes, R6G comes as two isomers, 5- and 6-isomer. Even though their absorption and emission spectra are virtually indistinguishable, the isomers need to be separated to avoid separation of the labeled molecules during their purification, i.e. double HPLC peaks and double spots on electrophoresis.

This is an amine reactive NHS ester derived from a pure 5-isomer of R6G. Rhodamine 6G is very bright (even used as a quantum yield standard, yield 0.95). The dye is soluble in organic solvents, such as DMF, or DMSO. They can be used as co-solvents for the labeling reactions.



外观:

分子量: 555.58

分子式:  $C_{31}H_{29}N_3O_7$

溶解度:

质量控制:

储存条件:

激发/吸收极大值, 纳米: 519

$\epsilon$ , 摩尔吸光系数,  $cm^{-1}$ : 116000

发射极大值, 纳米: 546

荧光量子产率: 0.95

$CF_{260}$ : 0.18

$CF_{280}$ : 0.17