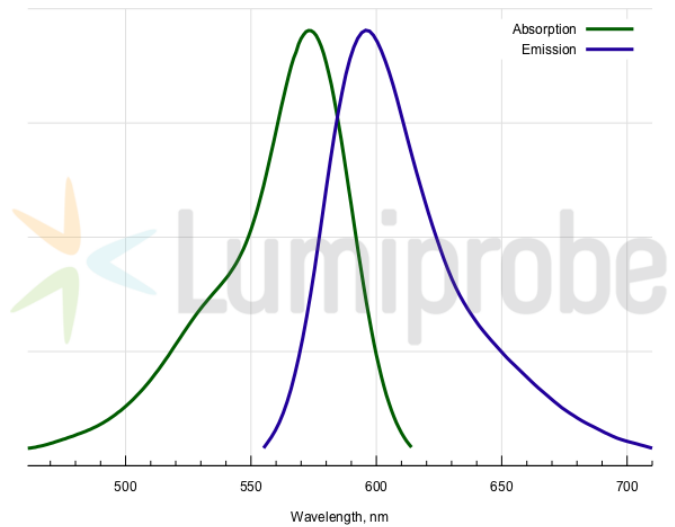
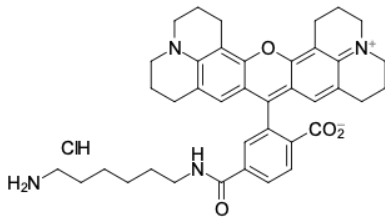


## ROX amine, 6-isomer

<http://cn.lumiprobe.com/p/rox-amine-6>

This product is an amine derivative of ROX (Rhodamine X, Rhodamine 101) dye with an amine group separated from the fluorophore by a long linker that facilitates conjugation. The aliphatic primary amine group can be coupled with various electrophiles (activated esters, epoxides, etc.) and used in enzymatic transamination labeling.

ROX is a red-emitting fluorophore possessing high brightness and fluorescence quantum yield. This reagent is a pure 6-isomer.



外观:

分子量: 669.27

分子式:  $C_{39}H_{45}ClN_4O_4$

溶解度:

质量控制:

储存条件:

激发/吸收极大值, 纳米: 570

$\epsilon$ , 摩尔吸光系数,  $cm^{-1}$ : 93000

发射极大值, 纳米: 591

荧光量子产率: 1.0

$CF_{260}$ : 0.62

$CF_{280}$ : 0.49