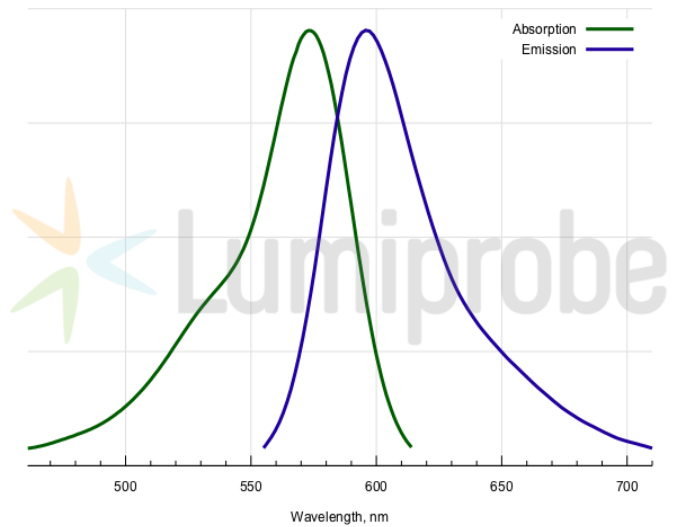
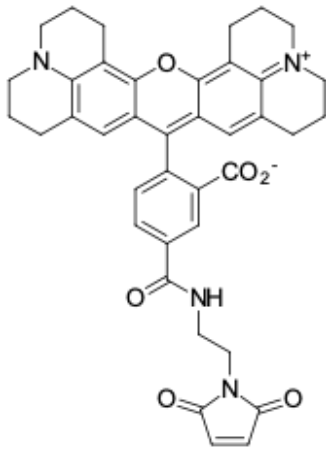


## ROX maleimide, 5-isomer

<http://cn.lumiprobe.com/p/rox-maleimide-5>

ROX is a bright rhodamine dye with emission maximum around 580 nm. It is widely used for the labeling of biomolecules. As other rhodamine dyes, it comes as two isomers, 5-ROX and 6-ROX. Although these isomers have almost identical spectral properties, they need to be separated to avoid doubling of labeled products on HPLC or electrophoresis.

This derivative contains thiol-reactive maleimide moiety for the attachment of ROX fluorophore to SH groups, such as cystein residues in proteins and peptides.



外观:

质谱 M+ 增量: 656.3

分子量: 656.73

分子式:  $C_{39}H_{36}N_4O_6$

溶解度:

质量控制:

储存条件:

激发/吸收极大值, 纳米: 570

$\epsilon$ , 摩尔吸光系数,  $cm^{-1}$ : 93000

发射极大值, 纳米: 591

荧光量子产率: 1.00

$CF_{260}$ : 0.62

$CF_{280}$ : 0.49