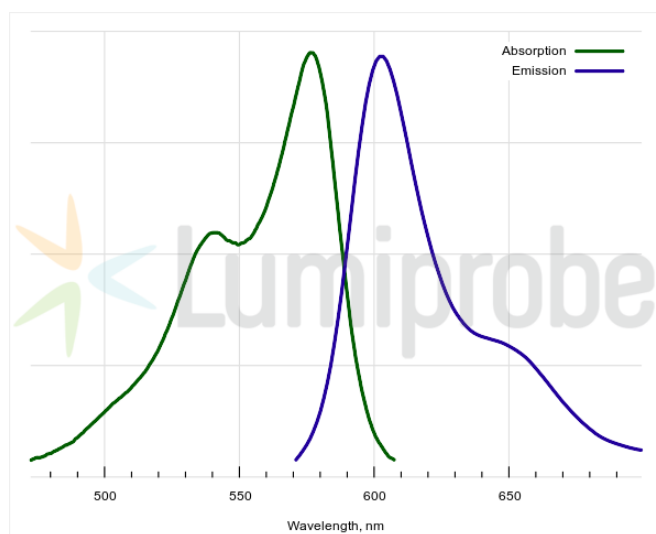
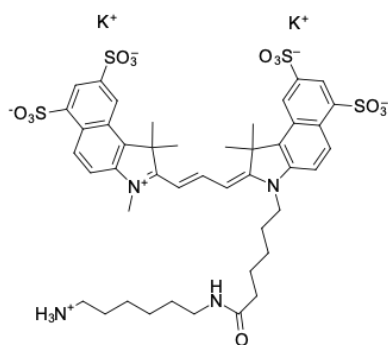


## sulfo-Cyanine3.5 amine

<http://cn.lumiprobe.com/p/sulfo-cy35-amine>

sulfo-Cyanine3.5 is a cyanine fluorophore with fluorescence in the red-orange spectrum range. Its absorption and emission spectra are between those of Cyanine3 and Cyanine5. As well as other cyanines, sulfo-Cyanine3.5 has an outstanding extinction coefficient. The dye possesses four sulfonate groups, rendering it highly hydrophilic and water soluble.

This product is an amine-containing fluorescent dye. The amine group is separated from the fluorophore by a relatively long linker that facilitates conjugation. The aliphatic primary amine group can be coupled with various electrophiles (activated esters, epoxides, etc.) and used in enzymatic transamination labeling.



外观:

分子量: 1051.38

分子式:  $C_{44}H_{52}K_2N_4O_{13}S_4$

溶解度:

质量控制:

储存条件:

激发/吸收极大值, 纳米: 576

$\epsilon$ , 摩尔吸光系数,  $cm^{-1}$ : 139000

发射极大值, 纳米: 603

荧光量子产率: 0.11

$CF_{260}$ : 0.16

$CF_{280}$ : 0.17