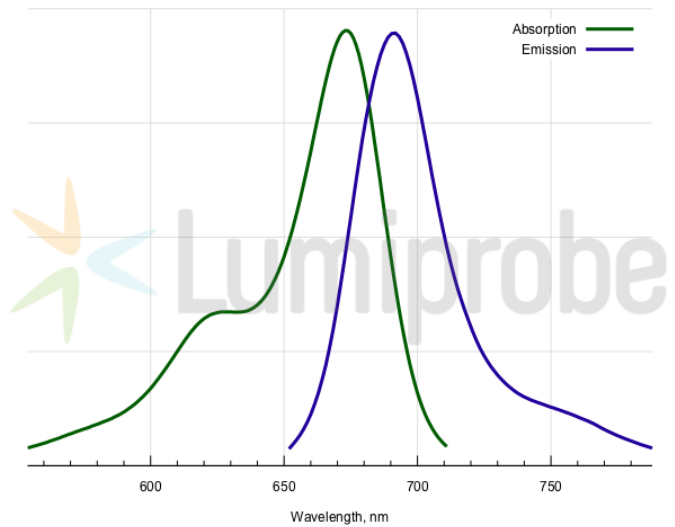
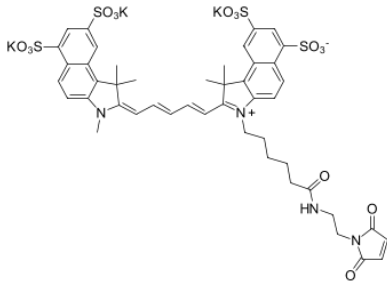


## sulfo-Cyanine5.5 maleimide

<http://cn.lumiprobe.com/p/sulfo-cy55-maleimide>

sulfo-Cyanine5.5 dye is a water-soluble far-red to NIR emitting dye that is very hydrophilic due to the presence of four sulfo groups. sulfo-Cyanine5.5 derivatives exhibit high water solubility. The dye is perfect for labeling sensitive proteins, nanoparticles, and highly hydrophilic biopolymers.

This maleimide is a thiol-reactive dye that selectively labels cysteine residues. Disulfide bonds of native proteins should be reduced with an appropriate reducing agent, such as TCEP, according to our recommended protocol.



外观:

质谱 M+ 增量: 1024.2

分子量: 1139.43

CAS 编号: 2183440-58-4 (potassium salt); 2183440-57-3 (inner salt)

分子式:  $C_{46}H_{45}K_3N_4O_{15}S_4$

溶解度:

质量控制:

储存条件:

激发/吸收极大值, 纳米: 673

$\epsilon$ , 摩尔吸光系数,  $cm^{-1}$ : 211000

发射极大值, 纳米: 691

荧光量子产率: 0.21

$CF_{260}$ : 0.09

$CF_{280}$ : 0.11