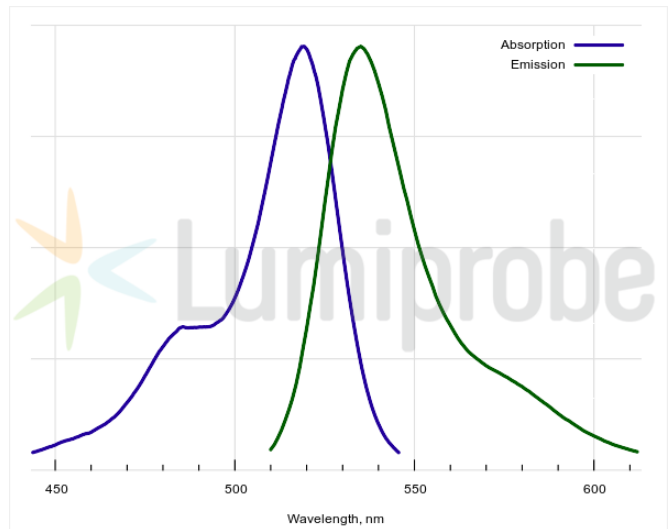
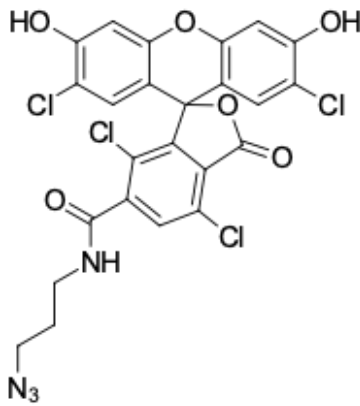


TET azide, 6-isomer

<http://cn.lumiprobe.com/p/tet-azide-6>

TET (tetrachlorofluorescein) is a green-fluorescent fluorescein derivate with absorption maximum at 519 nm and emission maximum at 535 nm. TET is spectrally similar to R6G, JOE, and VIC, widely used for labeling PCR probes.

Oligonucleotides labeled with TET are often used in real-time PCR; the preparation of such oligonucleotides can be performed using click chemistry. This derivative is an azide, a pure 6-isomer, for conjugating TET to other molecules by copper-catalyzed and copper-free click reactions.



外观:

分子 596.21

量:

CAS 1450752-90-5

编号:

分子 $C_{24}H_{14}Cl_4N_4O_6$

式:

溶解

度:

质量

控制:

储存

条件:

法律 本产品仅供研究目的提供和销售。 本产品并未经过食品、药品、医疗器械、化妆品等领域的安全性和效力测试，且未经明示或暗示授权用于其他任何用途，包括但不限于体外诊断声明：断、人类或动物用途，以及商业用途。

激发/ 519

吸收

极大

值，

纳米:

ϵ , 摩 100000

尔吸

光系

数 m^2

发射 535

极大

值，

纳米:

荧光 0.47

量子

产率:

CF_{260} : 0.17

CF_{280} : 0.09